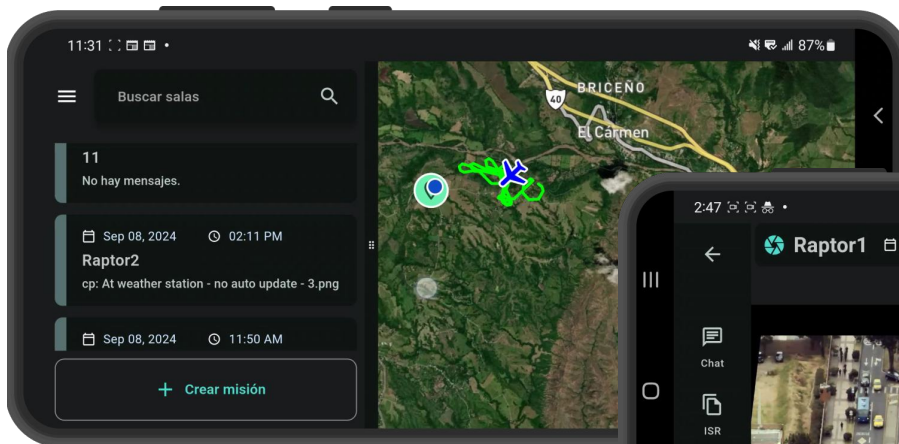


# TOLANA

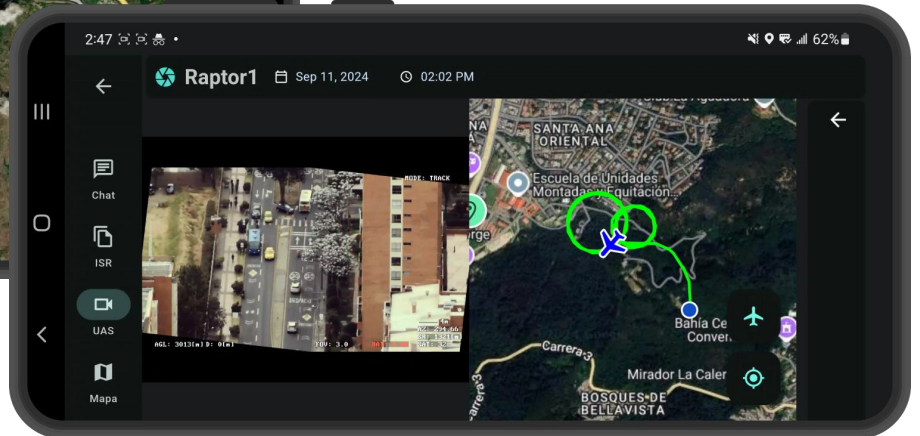
# Vector

## Vector Patrol & Targeting Software Application

Vector is a lightweight, easy to use software solution that connects aircraft, air controllers, ground teams and command elements in a multi-mission environment. Through its cutting-edge software technology, Vector connects teams to live drone video and telemetry, communication services, and collaboration tools. Traditionally, drone video is limited to a chosen few - the pilot and select viewers. Vector has changed the game so that any team member can access drone video and telemetry in real-time no matter where they are. Beyond just viewing, teams can communicate, share insights, and collaborate seamlessly in real-time, transforming drone operations into a fully integrated joint capability.



Vector Patrol application provides real-time monitoring of sensor events through Vector Server plus direct links to sUAS drones for HD video feeds and targeting



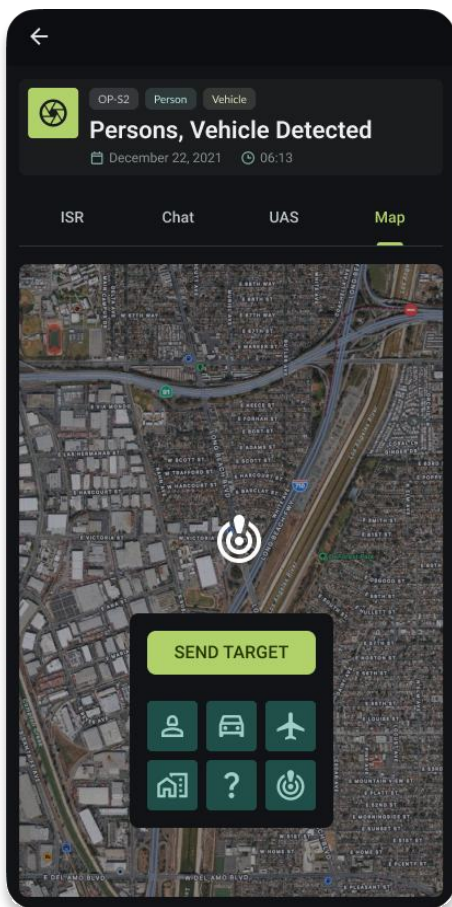
- Fusion and monitoring of remote sensors and assets into a single Graphical User Interface (GUI).
- Instant geospatial and contextual awareness of threats and events.
- Deliver real-time threat definition and simplified, real-time understanding of complex and dynamic situations.
- Visualize and share events through overlays from sensor feeds and geospatial data.
- Targeting capabilities for tasking of sUAS and other assets based on simple tagging and marking of target locations – seamless transfer of targeting data to deployed sUAS systems.
- Non-ITAR
- Fusion and monitoring of remote sensors and assets into a single Graphical User Interface (GUI).
- Manage events in real time by accessing time, location, images and metadata in a single interface
- Access multiple real-time video and data feeds from deployed camera, sensor and sUAS systems
- Support for multiple languages including Spanish
- Full integration to commercial Android devices





## Real-Time Targeting

Deployed teams can pass targeting information to air controllers for sUAS drone missions. In this way, real-time designation and classification of targets via cursor-on-target (CoT) can be sent from the ground and interface seamlessly with in-flight sUAS drones to provide precise targeting. This capability significantly reduces the 'sensor-to-shooter' time and simplifies target acquisition missions.



Targeting: Operators can drop targets to share with command and sUAS controller teams.

## Geospatial & Situational Awareness Capabilities

The Vector Patrol application supports a variety of situational awareness (SA) and collaboration features between deployed patrols and to command centers:

- **Markers:** Users can drop pins for Cursor-on-Target (CoT) and share Position Location Information (PLI). Markers can be annotated to denote designated friendly, enemy threats and general points of interest.
- **Mission Planning:** Missions in Vector are built around events and are self-contained to maintain a log of all activities, images and locations.
- **Chat/Messaging:** Vector supports end-to-end encryption and supports rich messaging as well as images and videos.
- **Navigation:** Vector's wayfinding feature automatically calculates the relative distance and bearing of targets and points-of-interest.
- **Breadcrumbs:** Commanders can see and track the movement of designated units over the course of a mission.
- **Targeting/KLV Data:** Vector supports MISB601 and STANAG KLV metadata playback for sUAS monitoring.
- **Event Monitoring:** Vector provides detection and monitoring capability via UGS, LWIR Cameras and sUAS. Additional sensors can be aggregated with the triggering event to gather additional ISR data for threat analysis and prosecution.
- **Video:** Vector supports UDP and RTSP video streaming, including MPEG.TS streams for KLV support.
- **PTZ Camera Support:** Vector supports common PTZ controls (Pelco-D).